

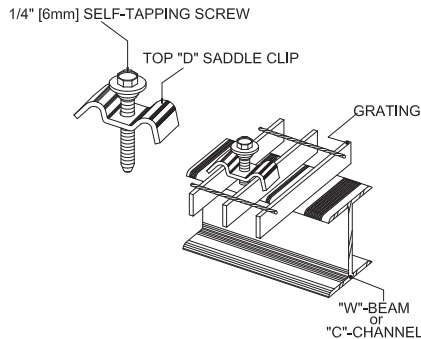


GRATING FASTENING METHODS

fastening methods information

BAR GRATING FASTENERS

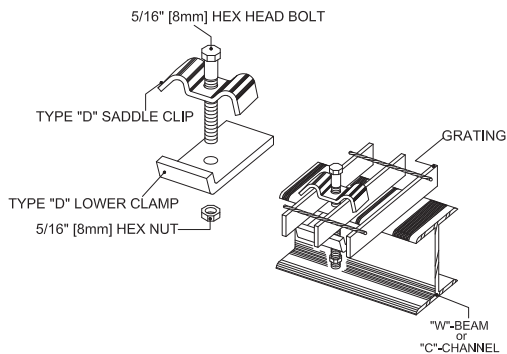
Type D Saddle Clip (complete with stainless steel self tapping screw)



Our most common and cost-effective fastening method. Simply pre-drill a hole into the supporting member and drive in the self-tapping screw. Designed for use with Tru-Weld Type 19 and Type 15 bar grating only (in 1/8" and 3/16" bar sizes).

Available in standard galvanized or bare steel and stainless steel options.

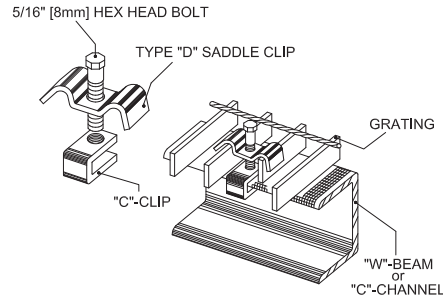
Type D Saddle Clip (complete with nut, bolt, and bottom clamp)



This combination allows for fastening grating without drilling into the supports. The Type D Saddle Clip holds the grating from the top as the bottom clamp is tightened under the flange of the supporting member. Designed for use with Tru-Weld Type 19 and Type 15 bar grating only (in 1/8" and 3/16" bar sizes).

Available in standard galvanized or bare steel and stainless steel options.

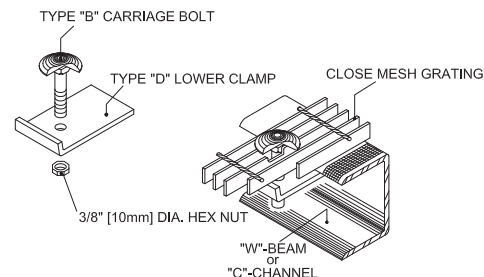
Type D Saddle Clip (complete with C-clamp and bolt)



Eliminates the need to drill supports or have access beneath the grating during installation. The C-clamp slides between the bearing bars to clamp the flange of the supporting member and is tightened from above using a hex-driver. For use with Tru-Weld Type 19 and Type 15 bar grating only (in 1/8" and 3/16" bar sizes).

Available in standard galvanized or bare steel and stainless steel options.

Type B Clamping Bolt, Nut, and Bottom Clamp



For close mesh Type 11 and Type 9.5 grating, a square collared clamping bolt can be inserted directly between the ends of the bearing bars and fitted through a bottom clamp. The rounded bolt head rests directly on the bearing bars eliminating the need for a top saddle clip.

Available by special order in bare steel, galvanized, and stainless steel.