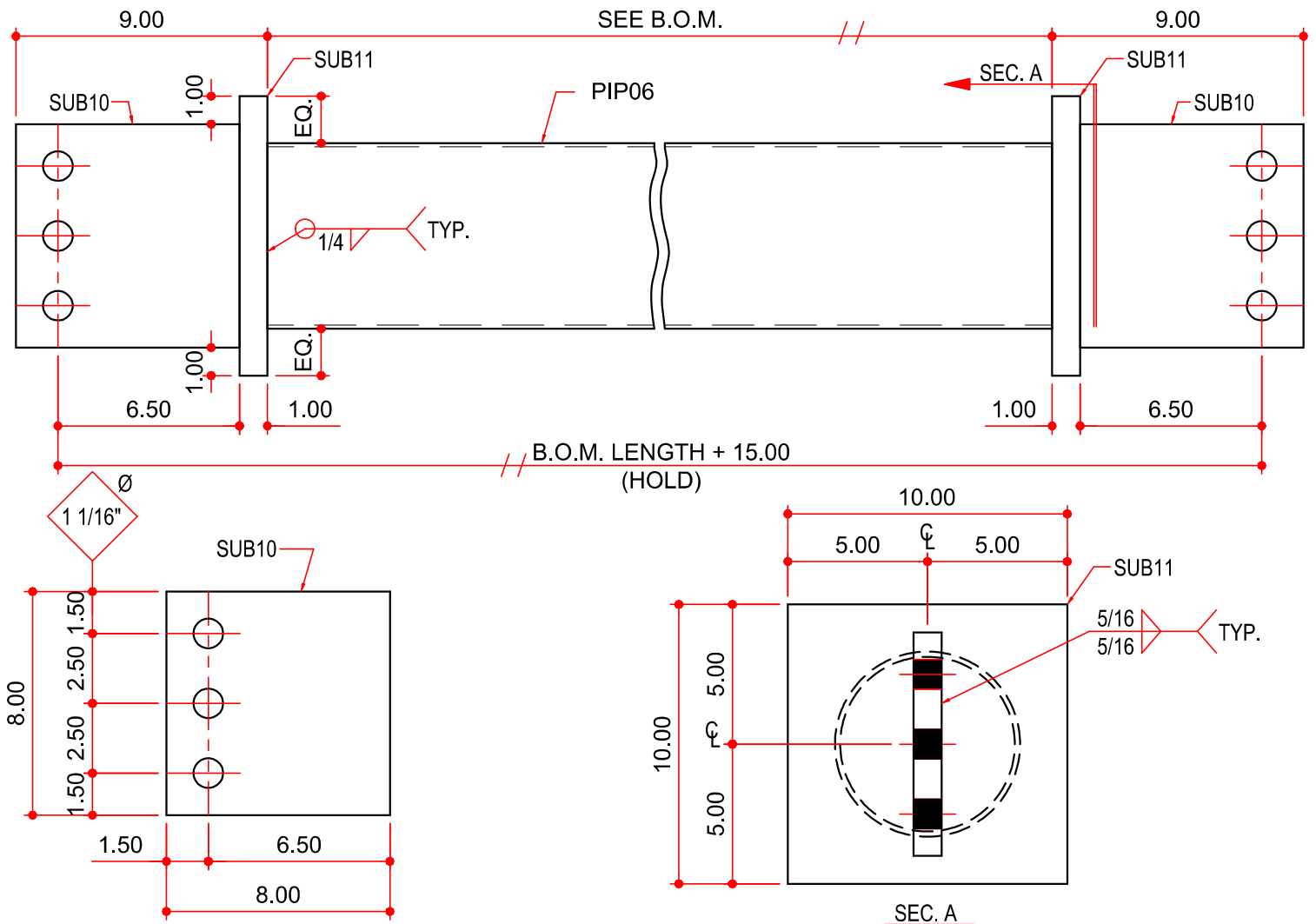


MASTER PART MARK	VIN	AVAILABLE THICKNESS	YIELD MIN.	BLANK LENGTH	BLANK WIDTH	WEIGHT (LBS)
SPT-	C	N/A	N/A	VARIABLES	N/A	VARIABLES
SUB PART MARK	VIN	AVAILABLE THICKNESS	YIELD MIN.	BLANK LENGTH	BLANK WIDTH	WEIGHT (LBS)
PIP06	N/A	0.134 / 0.188	42 KSI	VARIABLES	6.625	VARIABLES
(2) SUB10	N/A	1.000	55 KSI	8.00	8.00	18.13
(2) SUB11	N/A	1.000	55 KSI	10.00	10.00	28.33



NOTES:

1) ALL WELDS PER AWS STANDARDS.

AVAILABLE COLORS

GP, HD, NP, RP