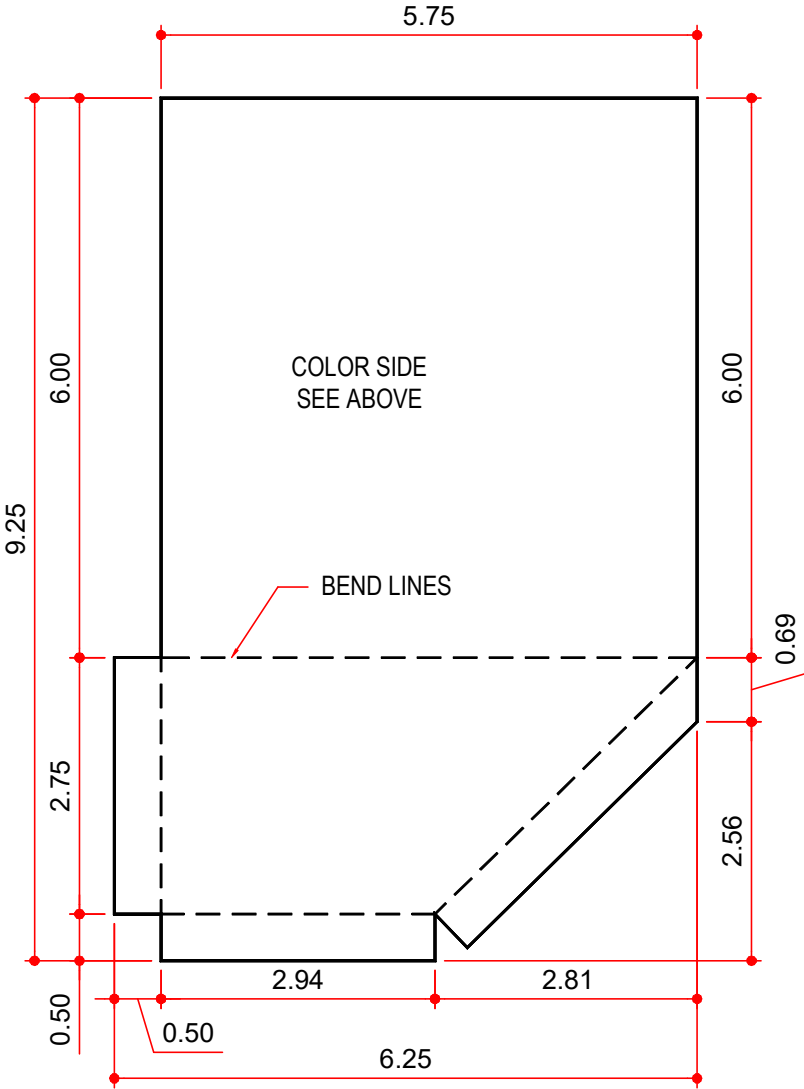
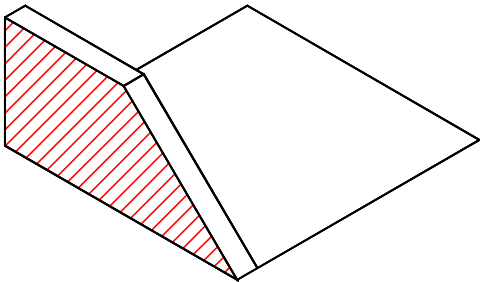


MASTER PART MARK	VIN	AVAILABLE THICKNESS	YIELD MIN.	BLANK LENGTH	BLANK WIDTH	WEIGHT (LBS)
RSC_	A	24 OR 26 GA	33 KSI	9.25	6.25	0.31

RSCL = BEND DOWN 90° COLOR NEAR SIDE
RSCR = BEND UP 90° COLOR FAR SIDE

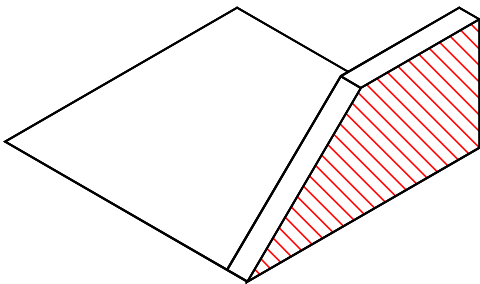


RSCR



QC NOTE:
NO SCRATCHES IN
HATCHED AREA
(COLOR SIDE)

RSCL



R S C _

LEFT OR RIGHT (L/R)
CAP - END OF TRIM
RAKE SCULPTURED TRIM

NOTES: **BUYOUT**
1) ALL BENDS ARE 90° UNO

AVAILABLE COLORS
ALL STANDARD SMP
& PVDF COLORS