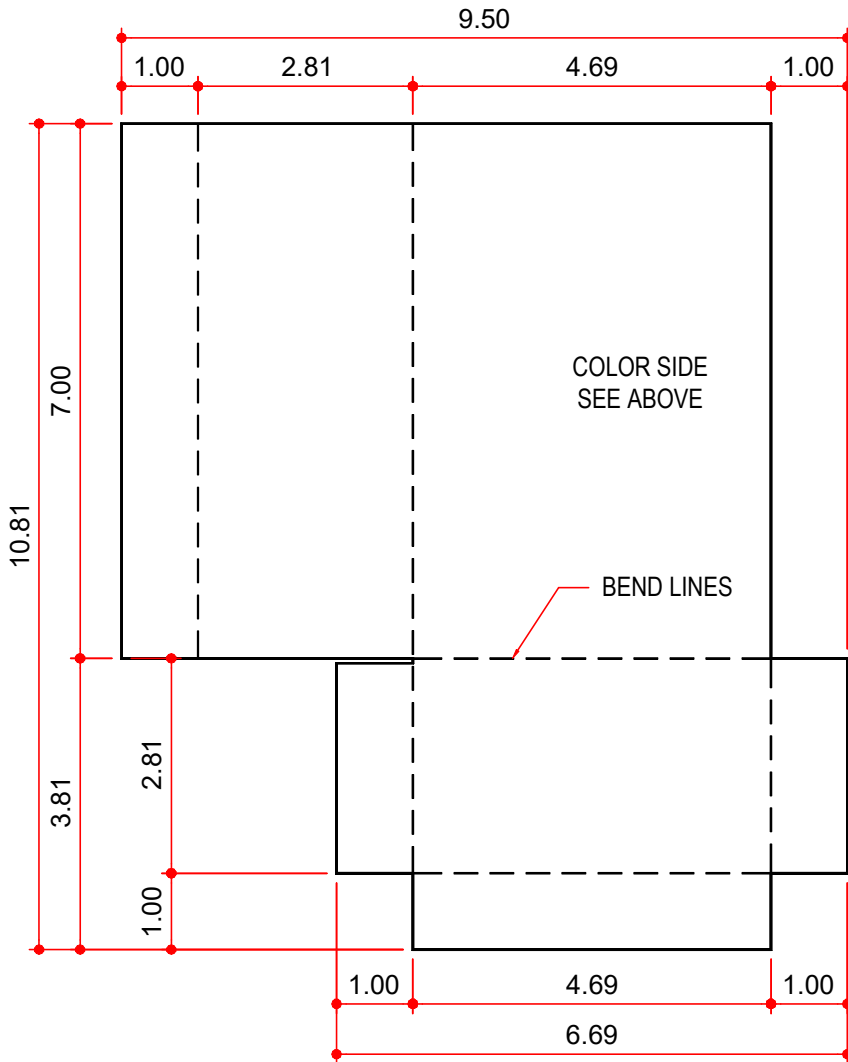


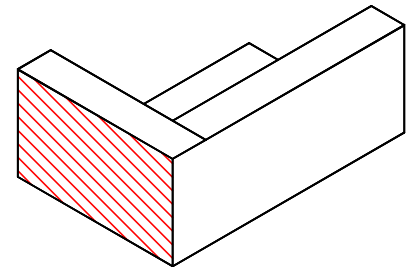
MASTER PART MARK	VIN	AVAILABLE THICKNESS	YIELD MIN.	BLANK LENGTH	BLANK WIDTH	WEIGHT (LBS)
RPC_	A	24 OR 26 GA	33 KSI	10.81	9.50	0.55

RPCR = BEND DOWN 90°
RPCL = BEND UP 90°

COLOR NEAR SIDE
COLOR FAR SIDE

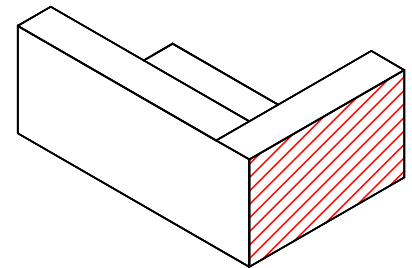


RPCR

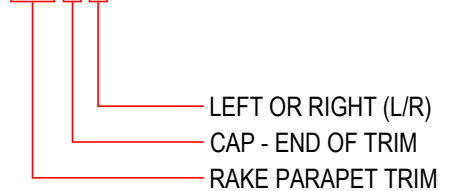


QC NOTE:
NO SCRATCHES IN
HATCHED AREA
(COLOR SIDE)

RPCL



RPC_



NOTES: **BUYOUT**
1) ALL BENDS ARE 90° UNO

AVAILABLE COLORS
ALL STANDARD SMP
& PVDF COLORS