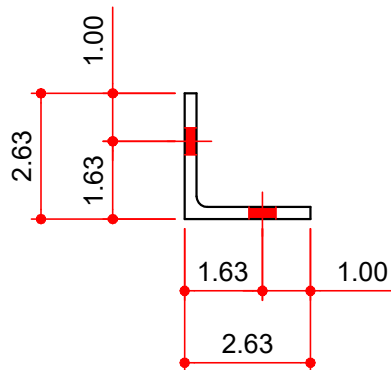
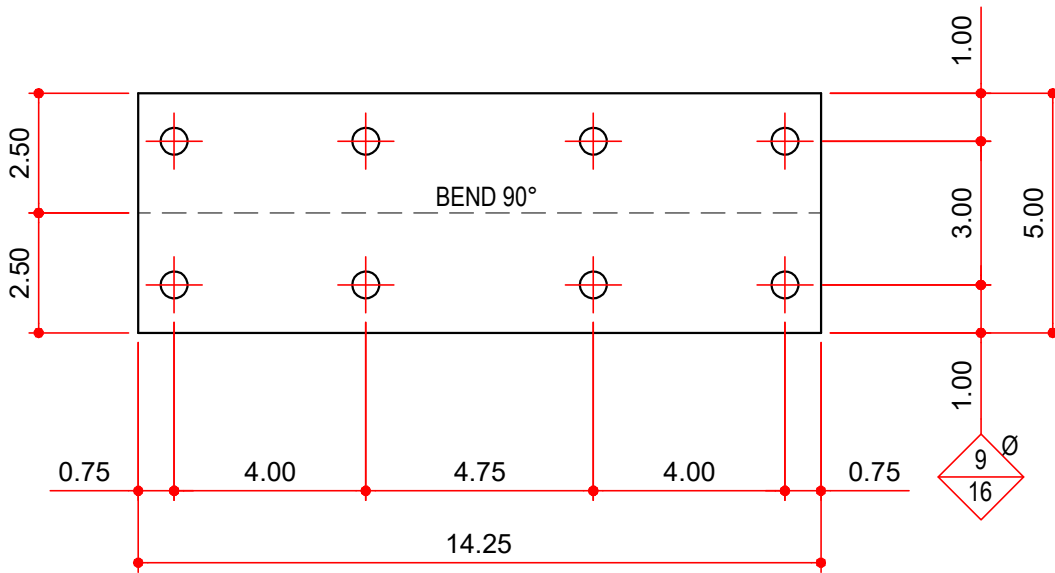


MASTER PART MARK	VIN	AVAILABLE THICKNESS	YIELD MIN.	BLANK LENGTH	BLANK WIDTH	WEIGHT (LBS)
PCC13	A	0.13 MIN.	55 KSI	14.25	5.00	2.52



NOTES:

1) N/A

AVAILABLE COLORS

GP, HD, RP