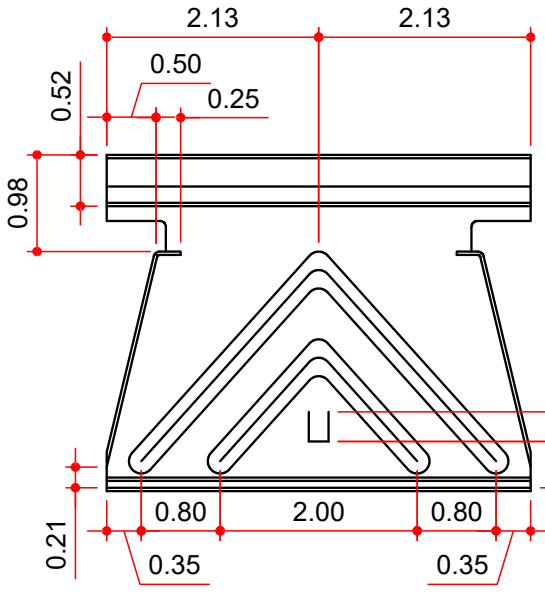
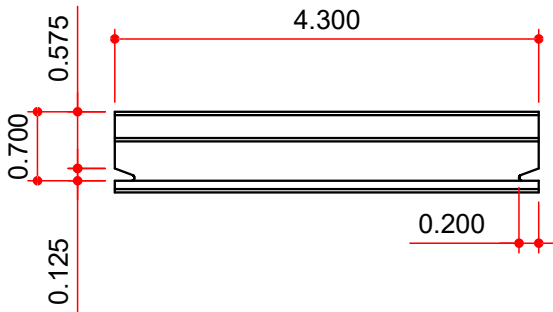


MASTER PART MARK	VIN	AVAILABLE THICKNESS	YIELD MIN.	BLANK LENGTH	BLANK WIDTH	WEIGHT (LBS)
H2520	B	N/A	50 KSI	N/A	N/A	0.37
H2530	B	N/A	50 KSI	N/A	N/A	0.41
H2540	B	N/A	50 KSI	N/A	N/A	0.46

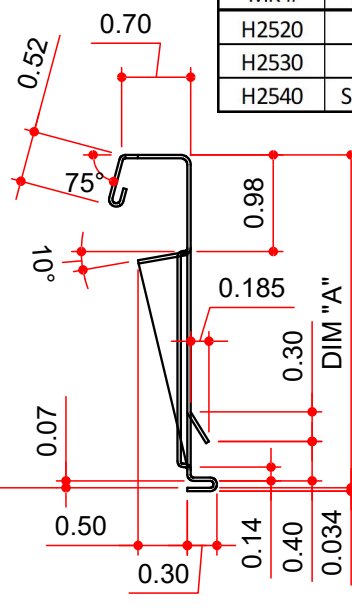
**MATERIAL:**

CLIP TAB: G-90 GALVANIZED STEEL (PER ASTM A-653) 50 KSI MIN YLD. 0.035 THICK

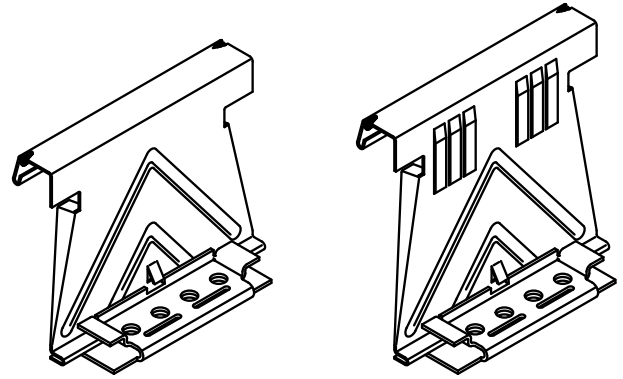
CLIP BASE: G-90 GALVANIZED STEEL (PER ASTM A-653) 50 KSI MIN YLD. 0.064 THICK



**CLIP TAB FRONT VIEW**



**CLIP TAB END VIEW**

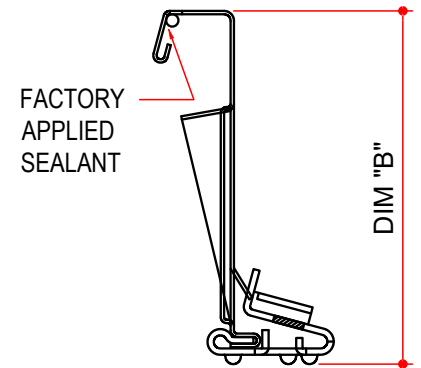


SHORT / TALL

SUPER TALL

**ASSEMBLED ISOMETRIC**

MK #	CLIP TYPE	STAND OFF	DIM "A"	DIM "B"
H2520	SHORT	1/2"	3.41	3.60
H2530	TALL	1 1/2"	4.41	4.60
H2540	SUPER TALL	2 1/2"	5.41	5.60



**ASSEMBLED END VIEW**

**NOTES: BUYOUT**

- 1) SUPER TALL CLIPS HAVE ADDITIONAL STIFFENING RIBS AS SHOWN IN ISOMETRIC. NOT DIMENSIONED ON FLAT VIEW.
- 2) CLIP TAB TO BASE ASSEMBLY IS A SLIDING FIT. MAX RESISTANCE 35LB OF FORCE TO CAUSE THE CLIP TAB TO SLIDE INSIDE THE BASE WHEN INSTALLED.

**AVAILABLE COLORS**

NP