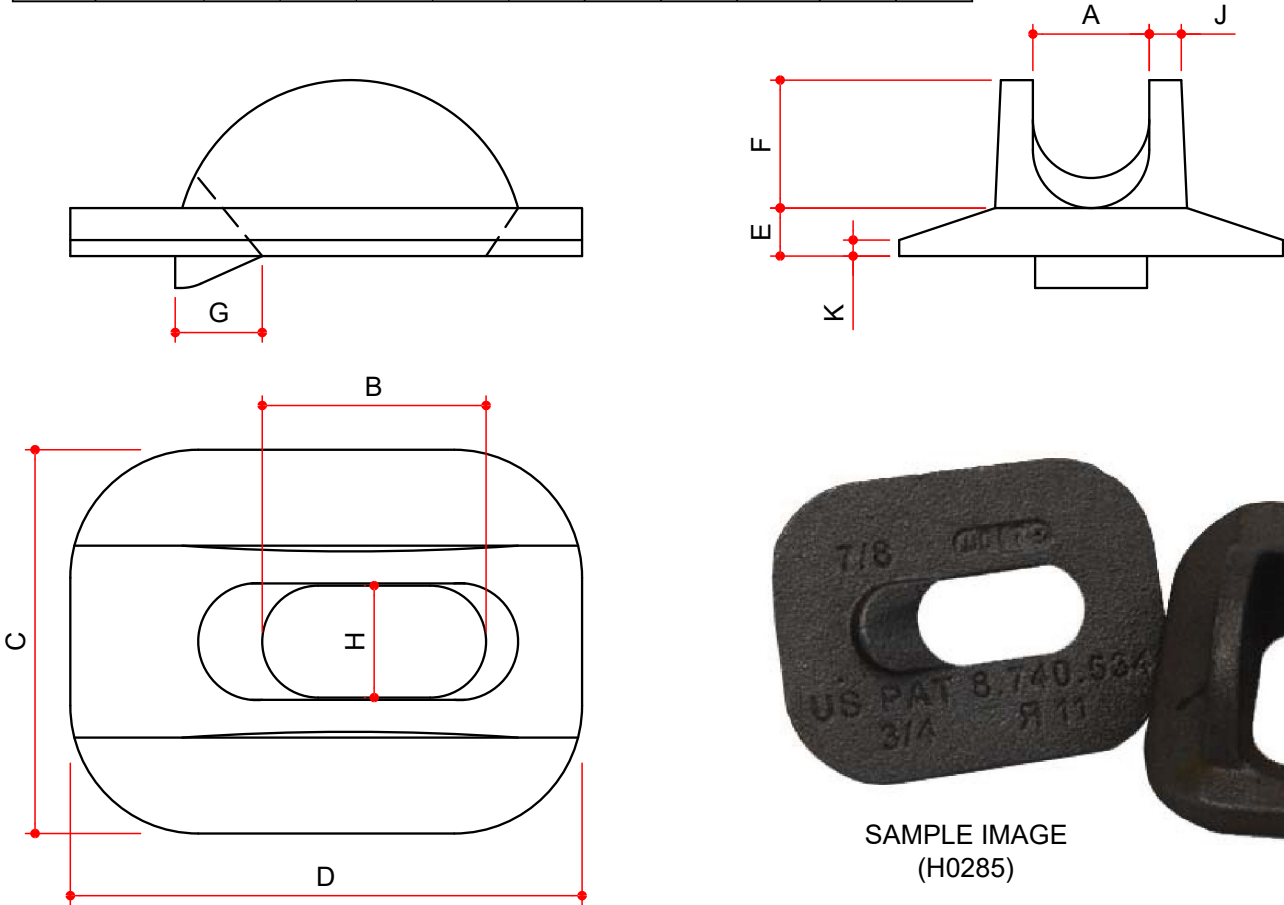


MASTER PART MARK	VIN	AVAILABLE THICKNESS	YIELD MIN.	BLANK LENGTH	BLANK WIDTH	WEIGHT (LBS)
H0280	A	0.500 - 0.625 Ø	N/A	N/A	N/A	0.975
H0285	A	0.750 - 0.875 Ø	N/A	N/A	N/A	1.213
H0290	A	1.000 - 1.125 Ø	N/A	N/A	N/A	1.944
H0295	A	1.250 Ø	N/A	N/A	N/A	2.075

MK#	ROD DIA	A	B	C	D	E	F	G	H(min.)	J	K
H0280	1/2"-5/8"	0.69	1.24	3.00	4.00	0.38	0.88	0.66	0.63	0.26	0.13
H0285	3/4"-7/8"	0.91	1.71	3.00	4.00	0.38	1.00	0.68	0.88	0.32	0.14
H0290	1"-1-1/8"	1.22	1.80	3.00	4.00	0.50	1.00	1.25	1.13	0.48	0.50
H0295	1-1/4"	1.64	2.18	3.08	4.00	0.45	1.00	1.30	1.30	0.45	0.45



SAMPLE IMAGE
(H0285)

NOTES: 1) *GZ NOT STOCKED AT ALL LOCATIONS. CHECK WITH YOUR LOCAL DIVISION FOR STOCK INVENTORY AND PURCHASE REQUEST REQUIREMENTS 2) H0280 = 5/8" DIAMETER RODS AND CABLE W/ 1/2" EYEBOLTS 3) H0285 = 3/4" - 7/8" DIAMETER RODS AND CABLE W/ 7/8" EYEBOLTS 4) H0290 = 1" - 1 1/8" DIAMETER RODS 5) H0295 = 1 1/4" DIAMETER RODS	AVAILABLE COLORS BK, *GZ
---	-----------------------------