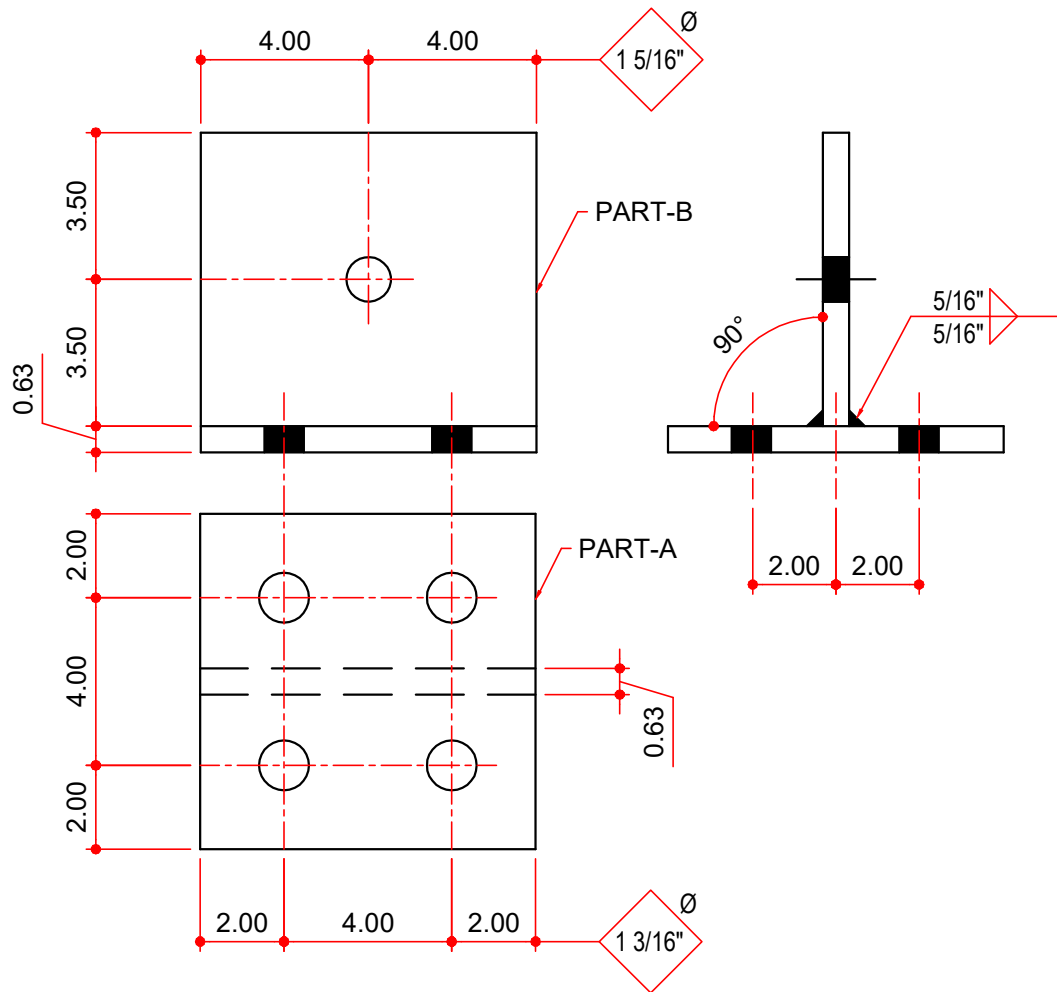


MASTER PART MARK	VIN	AVAILABLE THICKNESS	YIELD MIN.	BLANK LENGTH	BLANK WIDTH	WEIGHT (LBS)
BCC02	B	N/A	N/A	N/A	N/A	21.25
SUB PART MARK	VIN	AVAILABLE THICKNESS	YIELD MIN.	BLANK LENGTH	BLANK WIDTH	WEIGHT (LBS)
PART-A	N/A	0.625	55 KSI	8.00	8.00	11.33
PART-B	N/A	0.625	55 KSI	8.00	7.00	9.92



**NOTES:**

- 1) ALL WELDS PER AWS STANDARDS.

**AVAILABLE COLORS**

GP, HD, RP