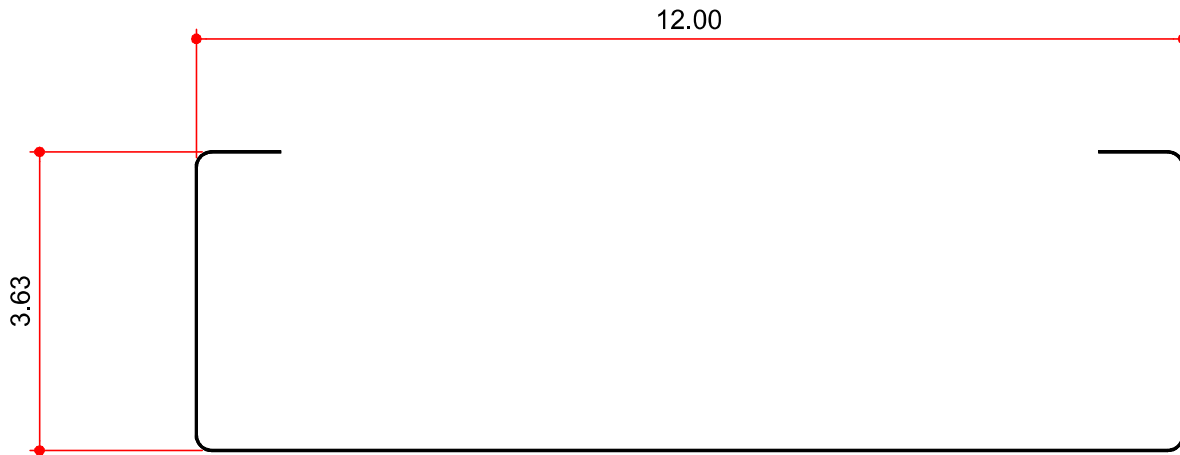


MASTER PART MARK	VIN	AVAILABLE THICKNESS	YIELD MIN.	BLANK LENGTH	BLANK WIDTH	WEIGHT (LBS)
B2C01	B	0.075	55 KSI	240.000	20.44	104.24
		0.089				123.70
		0.099				137.60



NOTES: 1) Profile is Standard 12" "S" shape	AVAILABLE COLORS
	GP, GZ, NP, RP