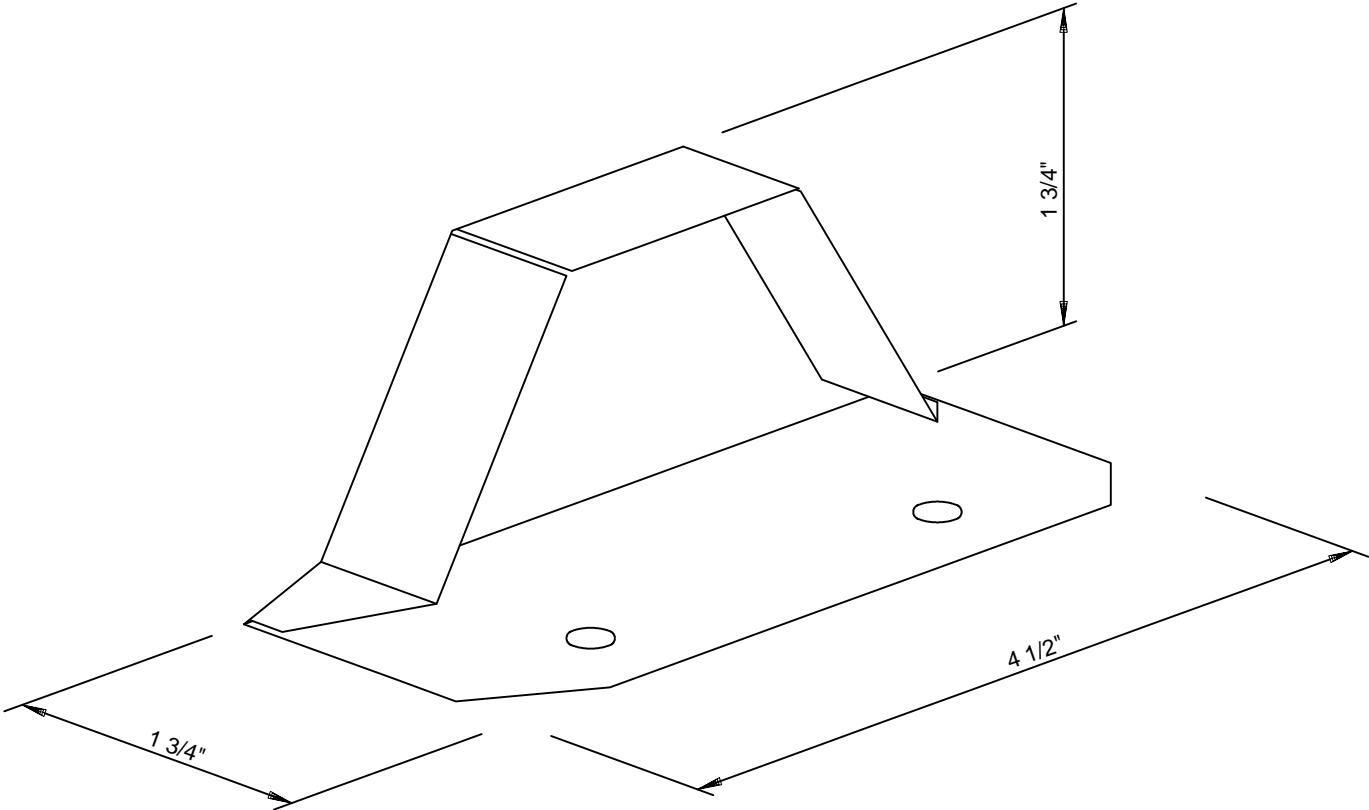


SS360 INSIDE METAL CLOSURE

MEC01

MASTER PART NUMBER	VINTAGE	AVAILABLE COLORS	THICKNESS	YIELD	BLANK WIDTH	BLANK LENGTH	TOTAL WEIGHT LBS	LRC
MEC01	A	GZ					0.27	

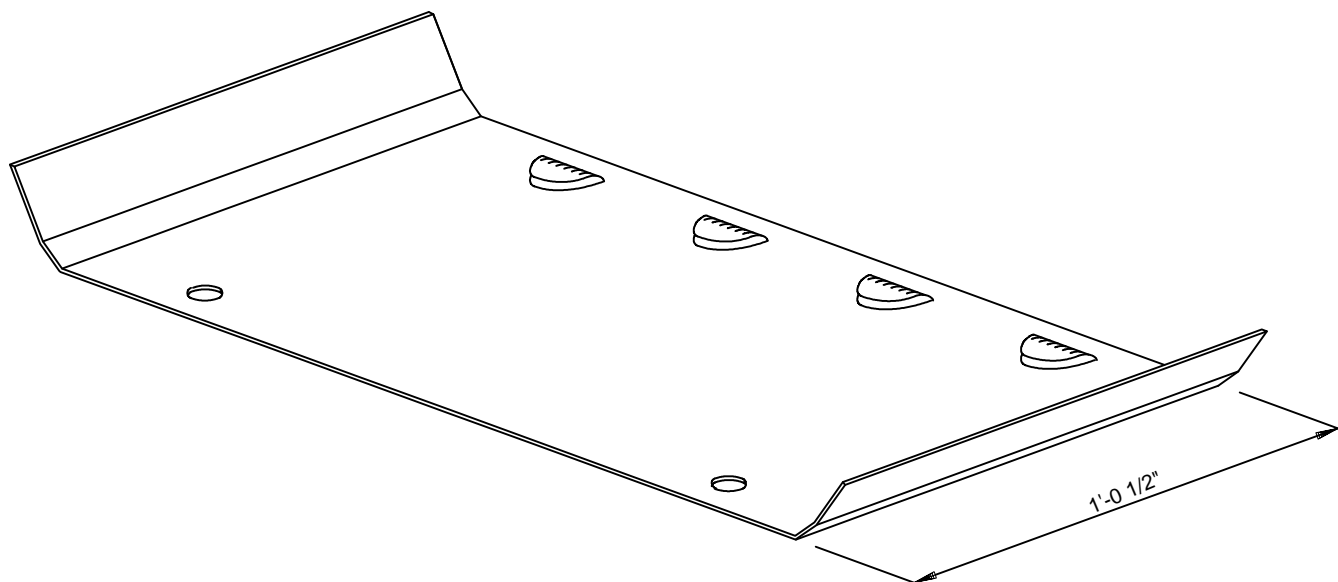


BUY OUT ITEM

SUB-UNIT PART NUMBERS	AVAILABLE COLORS	THICKNESS	YIELD	BLANK WIDTH	BLANK LENGTH	WEIGHT LBS

NOTES:

SS360 BACKUP PLATE							SBP01	
MASTER PART NUMBER	VINTAGE	AVAILABLE COLORS	THICKNESS	YIELD	BLANK WIDTH	BLANK LENGTH	TOTAL WEIGHT LBS	LRC
SBP01	A	GZ					5.10	



BUYOUT ITEM

SUB-UNIT PART NUMBERS	AVAILABLE COLORS	THICKNESS	YIELD	BLANK WIDTH	BLANK LENGTH	WEIGHT LBS

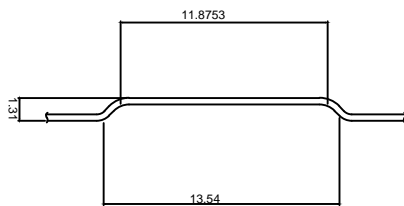
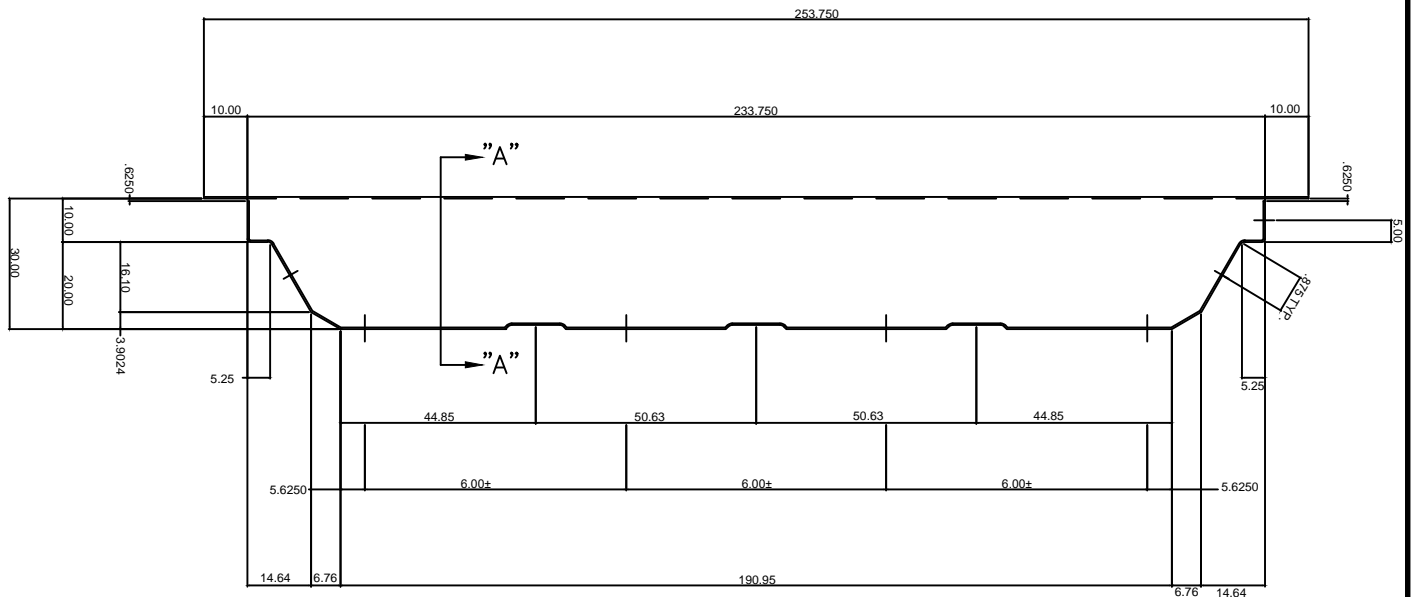
NOTES:

SS360 METAL OUTSIDE CLOSURE

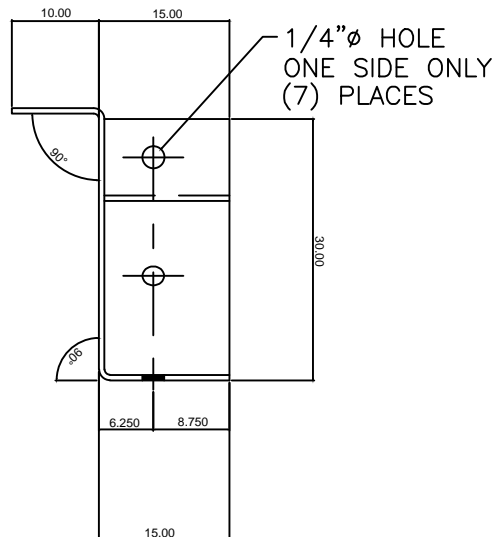
SLMC3

MASTER PART NUMBER	VINTAGE	AVAILABLE COLORS	THICKNESS	YIELD	BLANK WIDTH	BLANK LENGTH	TOTAL WEIGHT LBS	LRC
SLMC3	A	SEE AVAILBLE COLOR CHART	24 GA	33KSI			1.4	

BUYOUT ITEM



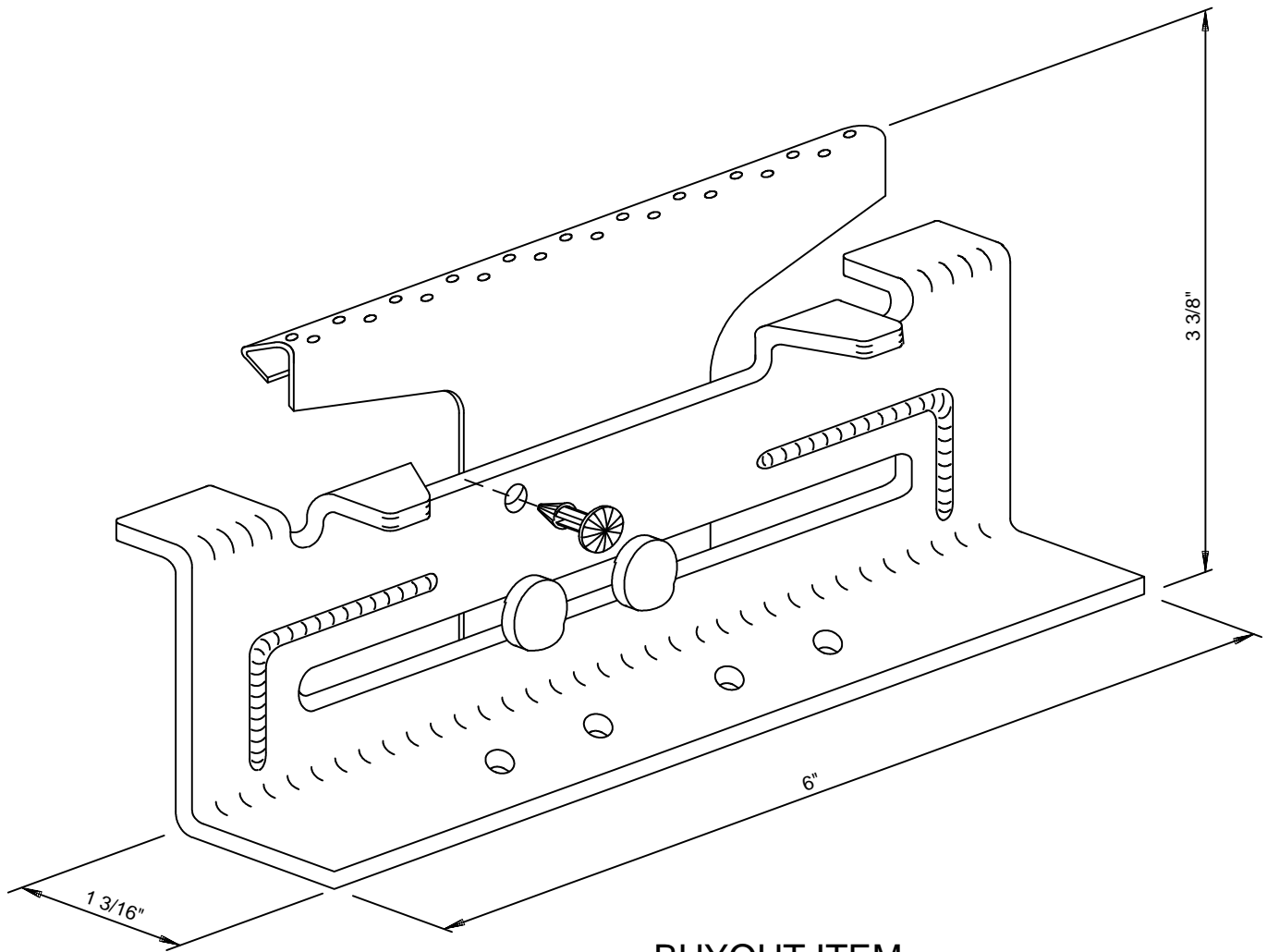
MINOR RIB



SECTION A-A

NOTES:

SS360 LOW CLIP							SSC01	
MASTER PART NUMBER	VINTAGE	AVAILABLE COLORS	THICKNESS	YIELD	BLANK WIDTH	BLANK LENGTH	TOTAL WEIGHT LBS	LRC
SSC01	A	GZ					0.62	



BUYOUT ITEM

SUB-UNIT PART NUMBERS	AVAILABLE COLORS	THICKNESS	YIELD	BLANK WIDTH	BLANK LENGTH	WEIGHT LBS

NOTES:

BY: BKC

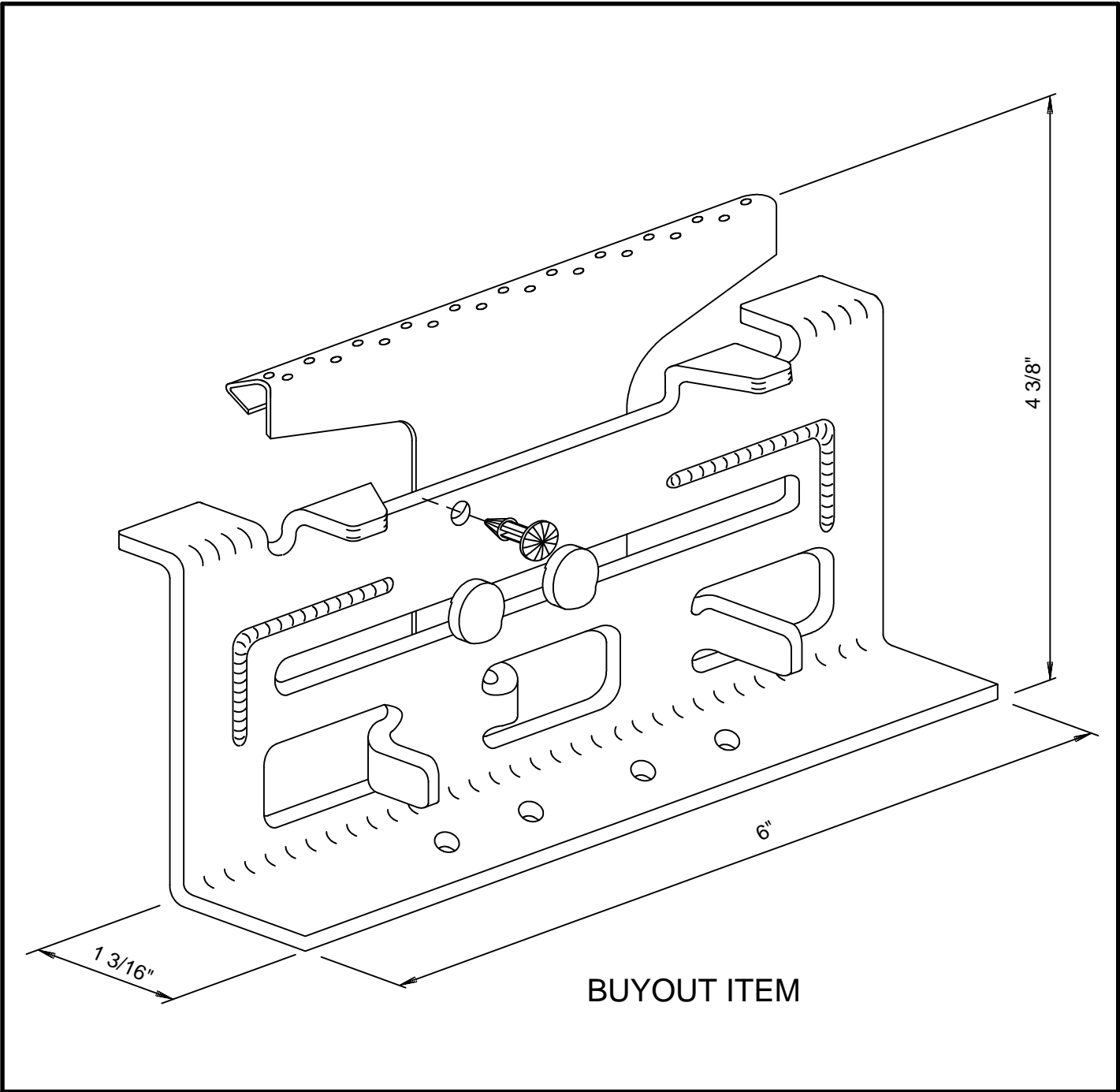
CHK:

ENG:

LAST REVISION DATE: 9-28-16

PAGE NUMBER: XX

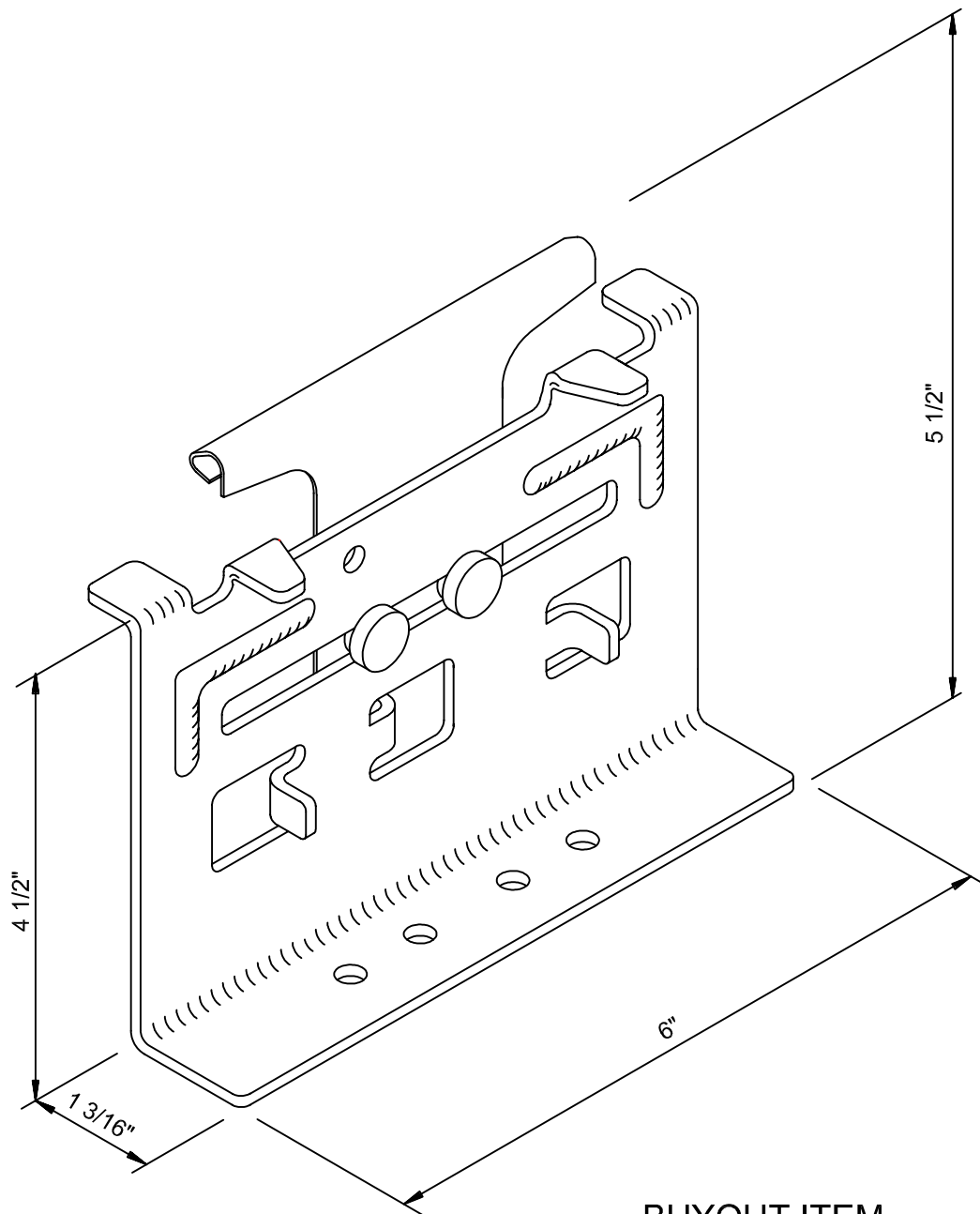
SS360 HIGH CLIP							SSC02	
MASTER PART NUMBER	VINTAGE	AVAILABLE COLORS	THICKNESS	YIELD	BLANK WIDTH	BLANK LENGTH	TOTAL WEIGHT LBS	LRC
SSC02	A	GZ					0.84	



SUB-UNIT PART NUMBERS	AVAILABLE COLORS	THICKNESS	YIELD	BLANK WIDTH	BLANK LENGTH	WEIGHT LBS

NOTES:

SS360 SUPER TALL CLIP							SSC03	
MASTER PART NUMBER	VINTAGE	AVAILABLE COLORS	THICKNESS	YIELD	BLANK WIDTH	BLANK LENGTH	TOTAL WEIGHT LBS	LRC
SSC03	A	GZ					0.977	

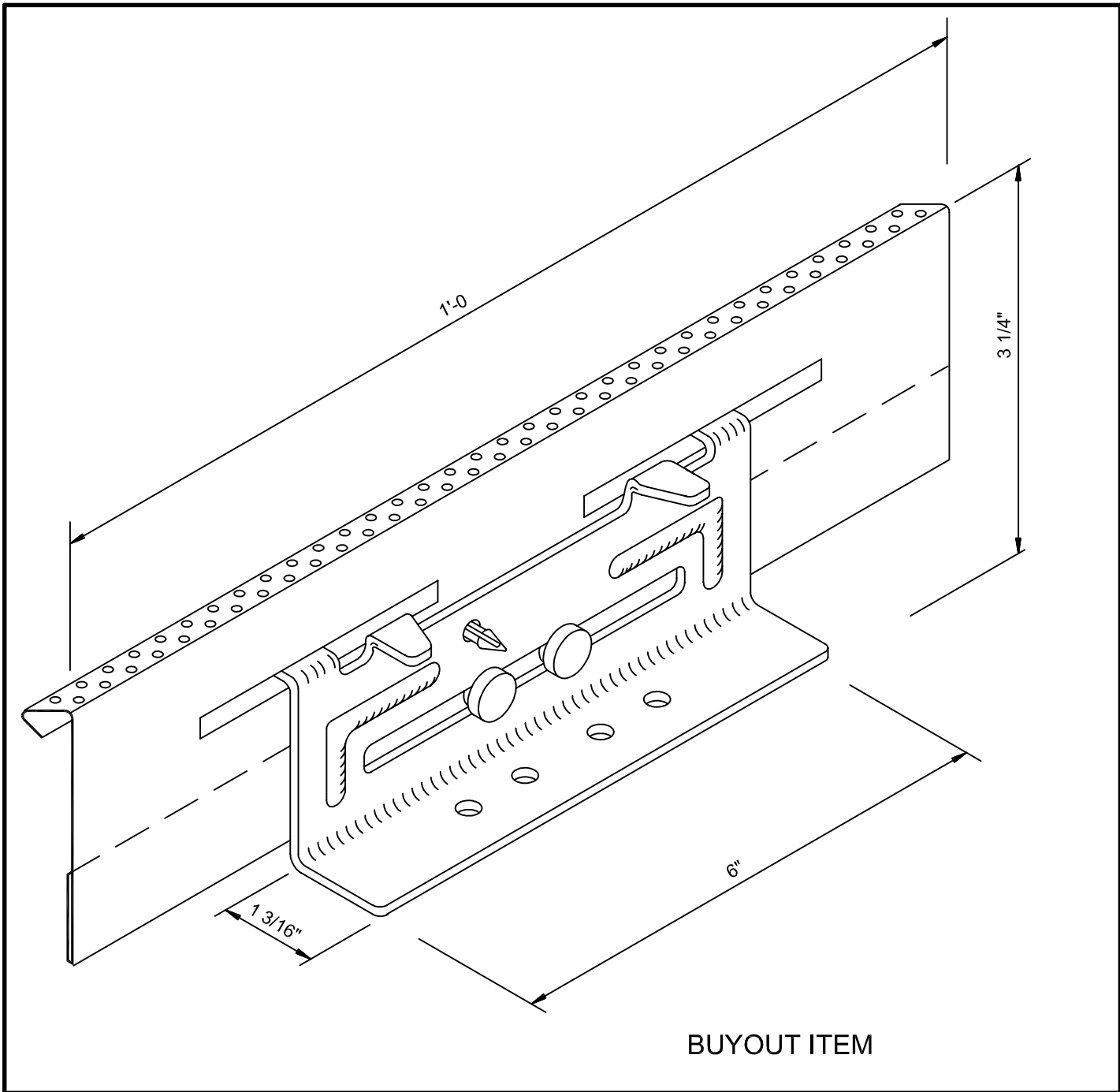


BUYOUT ITEM

SUB-UNIT PART NUMBERS	AVAILABLE COLORS	THICKNESS	YIELD	BLANK WIDTH	BLANK LENGTH	WEIGHT LBS

NOTES: Used at insulation systems over the purlins>8" to 12"thick.
(No FM or UL Approval)

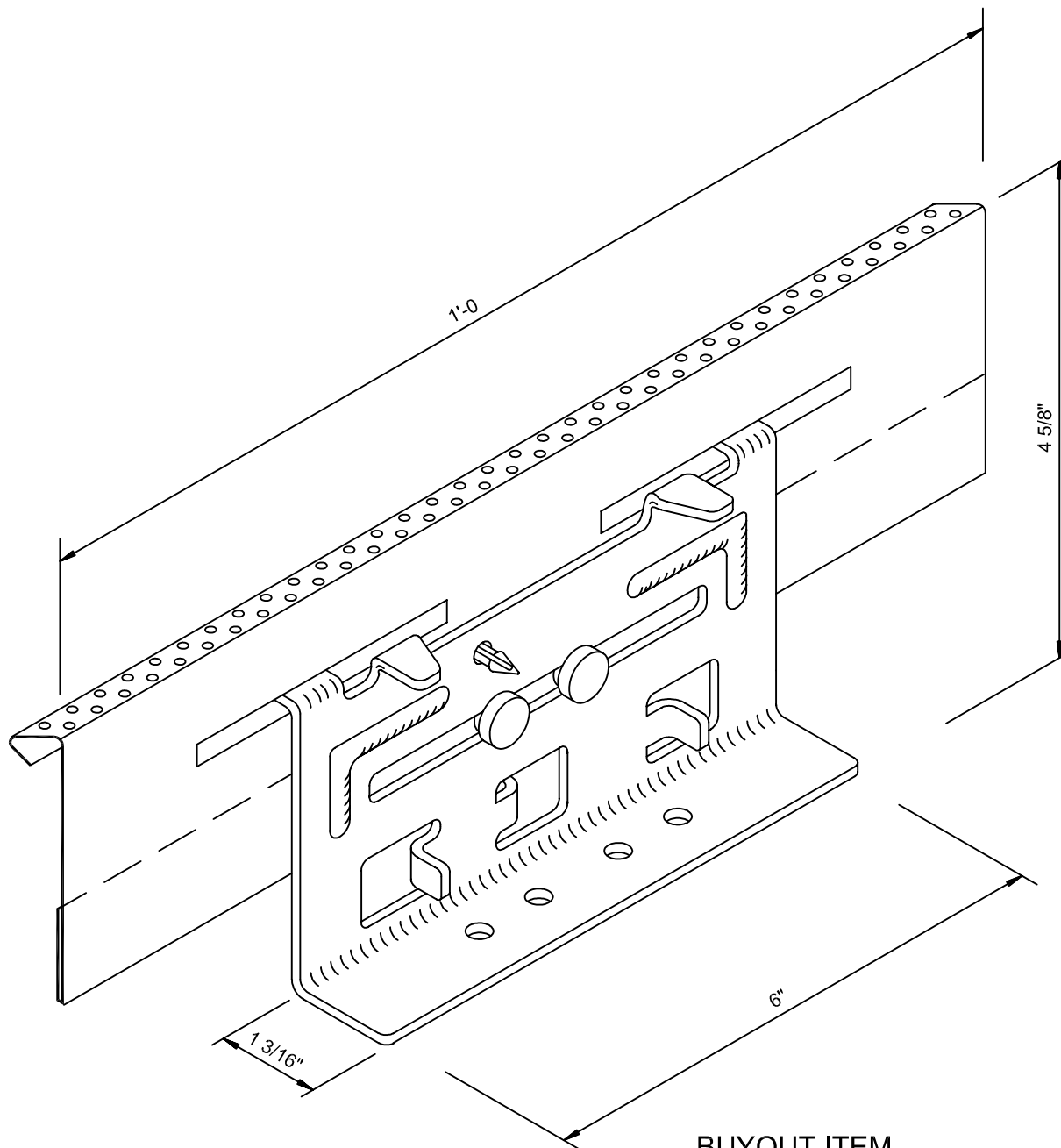
SS360 LOW PERIMETER (EDGE ZONE) CLIP							SSC04	
MASTER PART NUMBER	VINTAGE	AVAILABLE COLORS	THICKNESS	YIELD	BLANK WIDTH	BLANK LENGTH	TOTAL WEIGHT LBS	LRC
SSC04	A	GZ					1.451	



SUB-UNIT PART NUMBERS	AVAILABLE COLORS	THICKNESS	YIELD	BLANK WIDTH	BLANK LENGTH	WEIGHT LBS

NOTES: Used as Required by Design, Perimeter (Edge Zone).
(No FM or UL Approval)

SS360 HIGH PERIMETER (EDGE ZONE) CLIP							SSC05	
MASTER PART NUMBER	VINTAGE	AVAILABLE COLORS	THICKNESS	YIELD	BLANK WIDTH	BLANK LENGTH	TOTAL WEIGHT LBS	LRC
SSC05	A	GZ					1.708	



SUB-UNIT PART NUMBERS	AVAILABLE COLORS	THICKNESS	YIELD	BLANK WIDTH	BLANK LENGTH	WEIGHT LBS

NOTES: Used as Required by Design, Perimeter (Edge Zone).
(No FM or UL Approval)

BY:BKC

CHK:

ENG:

LAST REVISION DATE: 1-3-18

PAGE NUMBER: XX

SS360 Locking Clamp							SSPLC	
MASTER PART NUMBER	VINTAGE	AVAILABLE COLORS	THICKNESS	YIELD	BLANK WIDTH	BLANK LENGTH	TOTAL WEIGHT LBS	LRC
SSPLC	A	NP					2.48	

6) ROOF PANEL

Building Name	Roof Panel Type	Ext. Gauge	Ext. Color	Clip Type	Roof Insulation* (Not by KBS)	Hand Crimper Qty	Endlap Clamp Qty	Inst. Clamp Qty	Insulation Pan	Staggered Endlaps	Weather Tightness Warranty
Warehouse	Standing Seam 360	24 ga.	TBK	Sliding	4" Standard Fiberglass - Short Panel Clips	0	1	1	No	Yes	None

*Roof Insulation is not provided by Kirby. Insulation prevents condensation. Roof warranty options apply only to standard KBS Finishes. Refer to the Kirby recommends tail clips for insulation thickness greater than 4"

Supply both SSPLC and S3PVG when this field is populated

deration must be given by the designer to these issues.



SUB-UNIT PART NUMBERS	AVAILABLE COLORS	THICKNESS	YIELD	BLANK WIDTH	BLANK LENGTH	WEIGHT LBS

NOTES:

BY: BKC

CHK:

ENG:

LAST REVISION DATE: 4-17-18

PAGE NUMBER: XX

SS360 Duckbill Vise Grips							S3PVG	
MASTER PART NUMBER	VINTAGE	AVAILABLE COLORS	THICKNESS	YIELD	BLANK WIDTH	BLANK LENGTH	TOTAL WEIGHT LBS	LRC
S3PVG	A	NP					1.46	

6) ROOF PANEL

Building Name	Roof Panel Type	Ext. Gauge	Ext. Color	Clip Type	Roof Insulation* (Not by KBS)	Hand Crimper Qty	Endlap Clamp Qty	Inst. Clamp Qty	Insulation Pan	Staggered Endlaps	Weather Tightness Warranty
Warehouse	Standing Seam 360	24 ga.	TBK	Sliding	4" Standard Fiberglass - Short Panel Clips	0	1	1	No	Yes	None

*Roof Insulation is not provided by Kirby. Insulation prevents condensation. Roof warranty options apply only to standard KBS Finishes. Refer to the Kirby recommends tail clips for insulation thickness greater than 4"

Supply both SSPLC and S3PVG when this field is populated

Consideration must be given by the designer to these issues.



SUB-UNIT PART NUMBERS	AVAILABLE COLORS	THICKNESS	YIELD	BLANK WIDTH	BLANK LENGTH	WEIGHT LBS

NOTES:

BY: BKC

CHK:

ENG:

LAST REVISION DATE: 4-17-18

PAGE NUMBER: XX

SS360 Installation Clamp							SSPIC	
MASTER PART NUMBER	VINTAGE	AVAILABLE COLORS	THICKNESS	YIELD	BLANK WIDTH	BLANK LENGTH	TOTAL WEIGHT LBS	LRC
SSPIC	A	NP					3.00	

6) ROOF PANEL

Building Name	Roof Panel Type	Ext. Gauge	Ext. Color	Clip Type	Roof Insulation* (Not by KBS)	Hand Crimper Qty	Endlap Clamp Qty	Inst. Clamp Qty	Insulation Pan	Staggered Endlaps	Weather Tightness Warranty
Warehouse	Standing Seam 360	24 ga.	TBK	Sliding	4" Standard Fiberglass - Short Panel Clips	0	1	1	No	Yes	None

*Roof Insulation is not provided by Kirby. Insulation prevents condensation, noise and damage due to wind. Due consideration must be given to Roof warranty options apply only to standard KBS Finishes. Refer to the Kirby Building Systems Warranty Instruction Guide.
Kirby recommends tall clips for insulation thickness greater than 4"

Supply SSPIC when this field is populated



SUB-UNIT PART NUMBERS	AVAILABLE COLORS	THICKNESS	YIELD	BLANK WIDTH	BLANK LENGTH	WEIGHT LBS

NOTES: