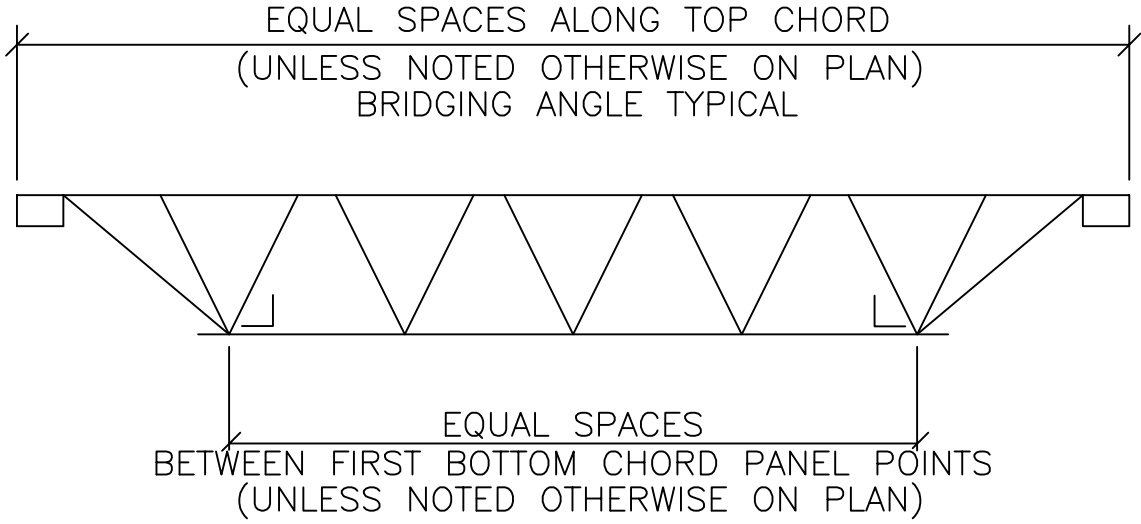
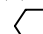
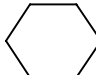


ERECTOR WARNING:
 THE UPLIFT BRIDGING DETAIL
 SHOWN BELOW MUST BE
 FOLLOWED OR BRIDGING SHORTAGES
 WILL RESULT!



UPLIFT BRIDGING REQUIREMENTS

BRIDGING SHOWN ON PLAN IS FOR TOP CHORD ONLY. FOR BRIDGING AT BOTTOM CHORD  ROWS WILL BE REQUIRED. LOCATE ONE ROW OF BRIDGING AT EACH FIRST BOTTOM CHORD PANEL POINT AT EACH END OF JOIST. REMAINING ROWS IN BETWEEN TO BE EQUALLY SPACED. SEE EXAMPLE ABOVE.

 =NUMBER OF ROWS OF B.C. BRIDGING.
 THIS INCLUDES BOLTED "X" IF REQ'D.