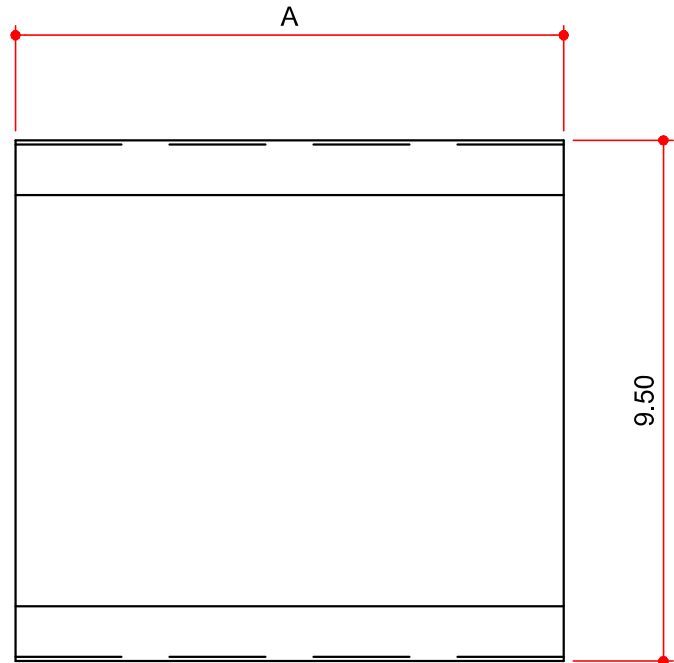


MASTER PART MARK	VIN	AVAILABLE THICKNESS	YIELD MIN.	BLANK LENGTH	BLANK WIDTH	WEIGHT (LBS)
C8PB	A	0.075	55 KSI	6.50	16.75	2.31
C9PB	A	0.075	55 KSI	7.50	16.75	2.67
C2PB	A	0.075	55 KSI	10.00	16.75	3.56

95C (14Ga)



PART DESCRIPTION		
PART NO.	DIM. A	PURLIN CONDITION
C8PB	6.50"	8" PURLIN
C9PB	7.50"	9 1/2" PURLIN
C2PB	10.00"	12" PURLIN

NOTES:

1) N/A

AVAILABLE COLORS

GP, RP, GZ